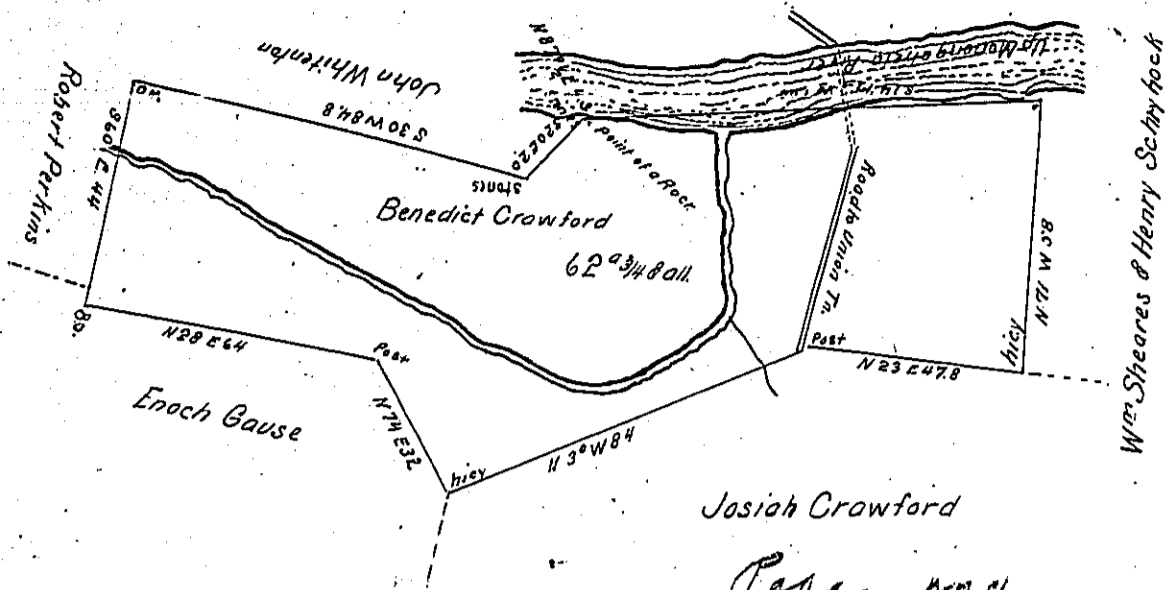


Note, this is draughted from a Scale of 50 pps to the Inch.
S.C.F.S.G.
R.M.C.



Josiah Crawford
Page 179

Situate on the Mouth of Rushy Run on the East side of Monongahela River now in Luzerne Township Fayette County and was Surveyed on the 20th April 1773. In pursuance of a Warrant dated the 13th day of November 1772. which Survey on Surveying the land of Enoch Gause and others adjacent was found to be erroneous. -there proving to ^{be} an equal Error. on opposite lines nearly parallel: to rectify which I have on the 25th October 1803 Resurveyed and Corrected such Errors as were found. also extending the lines bordering on the River a small distance further than the Original for the purpose of securing better the landing. & as well as a bank of Stone. Cole which appears in the Edge of the River at very low Water Mark. not before fully comprehended. which I thought reasonable he should pay for as advantages may derive there from the Error and alterations has occasioned an excess. but as the Original had circumscribed the whole a few perches excepted and the State not thereby Injured. - I submit it to your acceptance.

To Samuel Cochran Esquire Surveyor General.

pr. Alexander McClean Deputy.

IN TESTIMONY that the above is a copy of the original remaining on file in the Department of Internal Affairs of Pennsylvania, made conformably to an Act of Assembly approved the 16th day of February, 1833, I have hereunto set my Hand and caused the Seal of said Department to be affixed at Harrisburg, this nineteenth day of April 1904

James D. Brown
Secretary of Internal Affairs.